

Scanner QuickView

Fujitsu Europe Limited
Hayes Park Central
Hayes End Road
Hayes Middlesex UB4 8FE
England
Tel: (+44-(0)20) 8573 4444
Fax: (+44-(0)20) 8573 2643

Fujitsu Deutschland GmbH
Frankfurter Ring 211
80807 Munich
Germany
Tel: (+49-(0)89) 32378-0
Fax: (+49-(0)89) 32378-100

Fujitsu Italia S.p.A.
Via Nazario Sauro, 38
20099 Sesto San Giovanni (MI)
Italy
Tel: (+39) 0226294.1
Fax: (+39) 0226294.201

<http://emea.fujitsu.com/scanners>

ScanSnap S510
ScanSnap S500M
fi-5015C
fi-5110C
fi-5120C
fi-5220C
fi-5530C

fi-4340C
fi-5650C
fi-5750C
fi-4860C2
fi-5900C
fi-60F
fi-5000N
Soft IPC V2.5

Available from:
Alliance Group
Evans Business Centre
Hartwith Way
Harrogate HG3 2XA
<http://www.alliancegroup.co.uk>



FUJITSU

THE POSSIBILITIES ARE INFINITE

FUJITSU

THE POSSIBILITIES ARE INFINITE

FUJITSU

THE POSSIBILITIES ARE INFINITE

INTRODUCTION

Fujitsu offers the most comprehensive range of document scanners available on the market today. Manufactured to the highest quality standards, Fujitsu scanners have an excellent reputation for reliability. Indeed according to independent research*, Fujitsu sells more document scanners across Europe than all of their competitors added together.

Whether your application involves document management, archiving, workflow or forms processing, Fujitsu most likely has the optimum scanner for the capture of your documents and data.

FUJITSU SCANNERS CAN OFFER YOU:

- The ability to scan paper sizes from business card to A3
- Scan speeds from 15 to 200 images per minute
- Automatic document feeders as standard
- Simplex/duplex scanning
- Colour scanning capability as well as in black/white or grayscale
- Image enhancement for poor quality/mixed colour documents
- Complementary technologies across a broad range
- SCSI & USB models

Established in the UK in 1981, Fujitsu Europe Limited is a wholly owned subsidiary of Fujitsu Limited, the global electronics giant. An established player in the EMEA peripherals market, it is a major distributor of a range of scanner and computer storage products.

Fujitsu Limited is a leading provider of Internet based information technology solutions for the global marketplace. Comprising over 500 group companies and affiliates worldwide including ICL, Amdahl and DMR Consulting it had consolidated revenues of 4.8 trillion yen (\$40.6 billion) in the fiscal year ended March 31, 2006. Fujitsu's pace setting technologies, world class computing and telecommunications platforms, and global corps of over 60,000 systems and services experts make it uniquely positioned to harness the power of the Internet to help its customers succeed. Altogether the Fujitsu Group has 157,000 employees and operations in over 60 countries.

* McArthur Stroud International



CONTENTS

DOCUMENT SCANNERS

ScanSnap S510	4
ScanSnap S500M	5
fi-5015C	6
fi-5110C	7
fi-5120C and fi-5220C	8-9
fi-5530C	10
fi-4340C	11
fi-5650C and fi-5750C	12-13
fi-4860C2	14-15
fi-5900C	16-17

SMALL FORMAT SCANNER

fi-60F	18
--------	----

NETWORK SCANNING

fi-5000N	19
----------	----

CAPTURE ENHANCEMENT

Soft IPC V2.5	20
Kofax VRS	21
Assurance Programme	22-23
ISV Collaboration Centre	24-25
Specifications	26-28

ScanSnap S510 – new product



Operated via a unique device driver * the ScanSnap S510 is a professional PDF scanner enabling on-demand scanning without any additional work.

The ScanSnap S510 can convert up to 18 pages per minute into a PDF file at the click of a button.

It provides the user with two unique methods of optionally creating searchable PDF files – on-the-fly per document, or by setting the included ScanSnap Organizer to initiate an OCR process when the PC's CPU is idling. The Organizer can display PDF content and let the user zoom in and scroll through the document without having to launch the file, and key word searches can be initiated on any PDF files containing text. ScanSnap S510 can transform paper into Word documents, Excel spreadsheets, PowerPoint 2003 presentations or business card contacts for Outlook, Act! and Goldmine. Making use of the ScanSnap S510's high compression settings will allow for efficient one-touch email transmission of "paper" documents.

The scanner package features the full version of Adobe® Acrobat® 8.0 Standard, ABBYY® FineReader for ScanSnap software, ScanSnap Organizer and CardMinder, the business card management program. ScanSnap S510 also features the newly developed "Quick Menu" utility.



50 Sheets



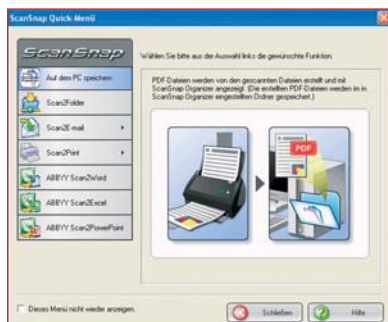
Simplex
18 ppm



Duplex
36 ipm



600 dpi



* Driving ScanSnap S510 is not possible using TWAIN or ISIS drivers.

ScanSnap S500M



The ScanSnap S500M is a unique PDF scanner that simplifies office routines within the Macintosh environment by enabling simple, high quality scanning of typical office documents.

By simply pressing a button* ScanSnap S500M will transform paper into PDF files. These can then be made searchable e.g. through initiating the OCR function which is embedded in the bundled full version of Adobe® Acrobat® 7.0 Standard. This lets piles of documents on top of office desks vanish instantly, yet keeps information at hand.

ScanSnap Manager and Adobe® Acrobat® Standard

ScanSnap Manager, the scanner's driver, allows for more sophisticated operations by defining e.g.

- Automatic file naming criteria (index, date)
- Compression rate for image data. Basic archiving allows for higher compression rates with smaller file sizes
- Auto Color and size detection
- Auto blank page removal in duplex mode

The possibilities of utilising this complete office solution that combines the ScanSnap S500M and the full version of Adobe® Acrobat® 7.0 Standard are invaluable and even collaboration on originally paper based information within teams becomes accessible electronically.

* Driving ScanSnap S500M is not possible using TWAIN or ISIS drivers.



50 Sheets



Simplex
18 ppm



Duplex
36 ipm



600 dpi

Options & Consumables (S510 & S500M)

- Paper separation module 50,000 sheets or 1 year
- Carrier sheet for A3 documents
- Pick roller – 100,000 sheets or 1 year
- Carry bag

fi-5015C



The fi-5015C from Fujitsu makes office life easier and more efficient. The built in ADF (Automatic Document Feeder) enables the user to continuously process up to 50 pages in one batch rather than scanning one by one. Pages are scanned at speeds of up to 15 pages per minute and if there is a need to scan delicate or bound documents this can be done via the in-built flatbed.

The fi-5015C has been designed with the professional office user in mind allowing for convenient personal use as well as easy integration into document management solutions through the TWAIN and ISIS drivers. Typical document related tasks like storage, personal archiving and support of workflow are enabled and enhanced by making use of this device and packaged content.

This scanning solution consists of the scanner, full versions of Adobe® Acrobat® 7.0 Standard and the text recognition application ABBYY® FineReader 8.0 Professional as well as an easy to use capture application – ScandAll.

Everything that is needed for scanning to file, for routing scanned copies to a printer, as well as retrieving information from documents that have been processed by the ABBYY® OCR engine can be found in this fi-5015C package.



50 Sheets



Simplex
15 ppm



50 to
600 dpi



fi-5110C



Fujitsu's fi-5110C scanner is an easy and affordable way for users to embrace professional document management, enabling easy archiving, processing and forwarding of everyday documents. Combining the scanner with customised software will substantially simplify everyday office routines in small businesses, medical offices or law firms.

Ease of handling is effortless and intuitive. Whether through the integrated TWAIN or ISIS drivers, the scanner can be controlled from within most document management solutions. It can also be controlled through its programmable user panel allowing the ability for scanning directly to fax, print or email.

The fi-5110C can scan at 15 ppm or 30 ipm in mono, greyscale and colour through the 50-sheet capacity ADF. Paper sizes from business card up to A4 or even extra long documents can be scanned with ease. Bundled with the scanner is a full version of Adobe® Acrobat® 7.0 Standard allowing the ability to create a PDF file.

fi-5110C with
cover open



In addition, the fi-5110C comes with a full version of ABBYY® FineReader 8.0 Professional. This application enables capturing text information contained on documents and storing this information in multiple file formats like PDF, DOC and XML.



50 Sheets



Simplex
15 ppm



Duplex
30 ipm



50 to
600 dpi

fi-5120C and fi-5220C



fi-5120C

The fi-5120C and fi-5220C desktop scanners from Fujitsu are the ideal scanners for small and medium sized businesses that need to archive documents, scan in reports to OCR, implement an efficient document management system or even create workflow solutions allowing single or workgroup usage.

Both scanners offer impressively high scanning speeds of 30 single sided pages or 60 images per minute in mono or colour at 150 dpi. The 50-sheet automatic document feeder is ideal for unattended scanning of multi page documents and is also great where mixed size scanning from A8 to A4 is required. The fi-5120C incorporates a foldaway output tray keeping the footprint size to a minimum.

Where the need exists for scanning valuable documents, for photos, magazine pages or books, the fi-5220C scanner comes with flatbed functionality as well as the ADF.

Paper handling with these scanners is exceptional allowing for greater reliability. A straight paper path ensures documents can be easily fed. Unique within this class of scanners, the inbuilt ultrasonic double feed detection mechanism immediately interrupts operation should two or more pages be drawn into the paper path simultaneously.

Resolutions of up to 600 dpi are achievable through the fi-5120C and fi-5220C and a variety of processing functions enable the image enhancement of even the poorest quality originals. The operator can select from a wide range of output file formats including TIFF, JPEG, BMP and PDF. A full version of Adobe® Acrobat® 7.0 Standard is included with both scanners. The fi-5120C and fi-5220C scanners perform image processing and enhancement based on their own hardware while scanning.

Making use of the fi-5120C and fi-5220C for every day document capture can be designed exactly to the individuals needs. For this purpose not only the resolution, colour mode or output format can be defined, but the operator can select to apply functions like image emphasis, error diffusion, moiré removal, dithering, drop out colour definition, auto cropping, deskew and background colour switching.

Furthermore when scanning batches of documents in mono mode both scanners support the operator with the function of 'Advanced Dynamic Threshold Control'. This automatically optimises every single page of the batch individually to its visible quality as well as to its usability to further processing tasks like OCR/ICR, thereby delivering a perfect page every time.

Additionally an optional imprinter for the fi-5120C scanner allows for a stamp of up to 40 characters to be printed on the back of every scanned document proving that all documents have been scanned.

Also available as an option for both scanners is the driver extension Soft IPC V.2.5, which can help contribute further to scanning efficiency.

These Fujitsu scanner models include a full license of Kofax VRS 4.1 Basic for utmost capturing simplicity and streamlined business process automation. It enables information workers to focus on their productive tasks, at the same time supporting them to capture information from paper documents by virtually pressing a button. VRS will dynamically adjust scanner settings for each document, ensuring next to perfect image quality every time you scan, without forcing you to become a master in scanning.



fi-5220C



50 Sheets



Simplex
30 ppm



Duplex
60 ipm



600 dpi

fi-5530C



The fi-5530C is the smallest scanner in its class to offer a dual SCSI/USB 2.0 interface and an A3 (or A4 landscape) ADF which can hold up to 100 sheets (A4, 80g/m²). It can process mixed batches with document sizes from A8 to A3. Its space saving design ensures that the scanner can be placed in even the smallest of desk areas and its output tray can be folded away when not in use.



The scanner displays remarkably quick scanning speeds at up to 600 dpi resolution, 35 pages per minute can be achieved at 200 dpi in portrait mode and this increases to 47 pages in landscape mode. Duplex scanning is also possible at 70 and 94 ipm respectively.

Designed with the user in mind there are simple to use scan and send buttons that allow for one touch-operation. The potential risk of timely re-scanning and checking is minimized with an in-built ultrasonic double feed detection feature that prevents two or more sheets being fed at the same time. Page rotation and automatic paper size detection is available through the driver whilst auto-cropping and auto-deskew help to enhance the captured image.



100 Sheets



Simplex
35 ppm



Duplex
70 ipm



600 dpi

The fi-5530C includes a full license of Kofax VRS 4.1 Basic for utmost capturing simplicity and streamlined business process automation. It enables information workers to focus on their productive tasks, at the same time supporting them to capture information from paper documents by virtually pressing a button. VRS will dynamically adjust scanner settings for each document, ensuring next to perfect image quality every time you scan, without forcing you to master in scanning.

An imprinter is available as an option that enables documents to be endorsed with up to 40 characters once they have been scanned.

fi-4340C

The Fujitsu fi-4340C is an ideal scanner for a wide range of departmental applications. It uses a 600 dpi camera enabling extremely high quality scans not only for typical document management needs, but even suited for scanning of graphics for web projects.



The fi-4340C offers the ability to scan at up to 40 pages per minute in simplex (80 ipm duplex) and 16 pages per minute in colour (29 ipm duplex). The ADF has a capacity of 100 sheets and can transport documents from A8 size up to A4. The fi-4340C features double feed detection and is equipped with a selectable USB 2.0 or SCSI-2 interface.



The fi-4340C includes a full license of Kofax VRS 4.1 Basic for utmost capturing simplicity and streamlined business process automation. It enables information workers to focus on their productive tasks, at the same time supporting them to capture information from paper documents by virtually pressing a button. VRS will dynamically adjust scanner settings for each document, ensuring next to perfect image quality every time you scan, without forcing you to become a master in scanning.

An imprinter is available as an optional extra that allows backside printing of up to 40 characters in a line to confirm that the document has been scanned.

Additionally when scanning high volumes of uniform documents in monochrome mode, Fujitsu's optional Soft IPC software allows the user to select pre-determined scanning profiles to obtain optimised image results. This software is even capable of multistreaming images in mono and colour within a single scan.



100 Sheets



Simplex
16 ppm



Duplex
29 ipm



600 dpi

fi-5650C and fi-5750C



fi-5650C

The fi-5650C and fi-5750C scanners from Fujitsu offer eye-catching ergonomics and functional excellence for departmental environments.

Both scanners scan at an impressive 55 A4 portrait pages per minute at 300 dpi in colour, grayscale or mono. When double sided documents are needed to be scanned 110 images per minute are achievable. Additionally if documents are scanned in A4 landscape speeds of 144 ipm are possible.



The fi-5650C is a unique 200 sheet ADF-powered device that can cope with mixed quality sheets from A8 to A3. The fi-5750C's ADF can be



turned a full 180 degrees allowing the user to select scanning positions to suit their preferences and space considerations. Additionally the fi-5750C offers the user a built-in flatbed for the scanning of bound or delicate documents.



200 Sheets



Simplex
55 ppm



Duplex
110 ipm



600 dpi

Both scanners offer the user superior handling capabilities with ultrasonic double feed detection as standard which stops the scanner in the case of a double feed. They feature a set of image enhancement functions like deskew (ensuring that documents that aren't placed in a straight edge format are straightened when scanned) and autcropping (ensuring that if mixed documents are scanned, only the scanned area will appear on screen).

The fi-5650C and fi-5750C are both capable of feeding diverse paper qualities without interruption since they feed from the bottom up allowing the operator to continuously feed the ADF.



fi-5750C

Since the paper path is absolutely straight, the scanners can also continuously feed very thick (maximum 203g/m²) or extremely thin documents (minimum 41g/m²).

Both scanners include a full license of Kofax VRS 4.1 Basic for utmost capturing simplicity and streamlined business process automation. It enables information workers to focus on their productive tasks, at the same time supporting them to capture information from paper documents by virtually pressing a button. VRS will dynamically adjust scanner settings for each document, ensuring next to perfect image quality every time you scan, without forcing you to master in scanning.



Adobe® Acrobat® 7.0 Standard is bundled with both scanners and as an option to increase scanning productivity even further for batch scanning, Fujitsu's Soft IPC is available.



fi-5650C with
imprinter

As an option for the fi-5650C an imprinter is available that prints pre-defined characters on the documents reverse side thereby marking them clearly as having been scanned.

fi-4860C2



Fujitsu's fi-4860C2 scanner offers the user scanning speeds of 74 ppm in both mono and colour and 148 ipm in duplex functionality (all speeds quoted are at 200 dpi in landscape mode).

A high throughput of 20,000 documents per day is achievable through the large 500-sheet hopper, that can handle mixed documents from A7 up to A3 size at resolutions of up to 400 dpi. Manual feeding is also possible.



The fi-4860C2 is an extremely compact scanner with a small footprint, measuring only 52 cm by 43 cm (width x depth) and featuring a foldable hopper and stacker.

The fi-4860C2 comes equipped with ultrasonic double-feed detection technology, which helps prevent lost images and enables larger batches of mixed document types to be scanned quickly, reliably and automatically. Enhanced dynamic paper feeding enables the scanning of ultra thin paper. The fi-4860C2 is additionally equipped with length sensors which also detect double feeds.



500 Sheets



Simplex
60 ppm



Duplex
120 ipm



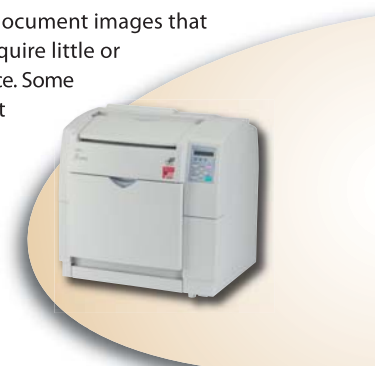
400 dpi

The fi-4860C2 offers the user hardware based deskew and auto cropping functionality. Deskew ensures that if documents are not placed in a straight edge format, they are straightened up as they are scanned. Auto cropping means that if mixed size documents are scanned, only the exact document area will appear on screen.

Available as optional extras are pre and post imprinters which enable printing of up to 40 characters as an index on the front or back of scanned documents. This additional security can be required in areas such as banking and insurance and can be combined with the driver controlled virtual imprinting function.

With an Ultra Wide SCSI interface a Third Party interface slot and up to 256 MB of memory, the fi-4860C2 is aimed at both document and data capture applications providing exceptional image quality and a great cost / performance ratio.

Hardware supported Kofax VRS 4.1 Professional hardware is bundled with the fi-4860C2 which can be used for adding advanced image enhancement operations to the scanning process. These can even be combined to receive digital document images that show high visual quality and require little or no additional manual interference. Some typical features include: intelligent content orientation recognition and auto-rotation, automatic colour detection, blank page detection and deletion, as well as background saturation.



Post Imprinter



Pre Imprinter

The compact fi-4860C2 scanner from Fujitsu with incredibly small footprint and low noise emission level provides users with high quality CCD technology which allows the user to select resolutions up to 400 dpi. This is ideal for OCR applications that require high quality images for optimum recognition rates.

fi-5900C – new product



The fi-5900C is a production level scanner built for applications needing to scan high volumes reliably and quickly whilst minimising the pre- and post-processing tasks of the operator. The fi-5900C can scan a wide range of paper qualities varying in size from A8 to A3 and thicknesses from 31 to 209 g/m² through the 500-sheet capacity hopper.



The fi-5900C provides selectable processing options through TWAIN or ISIS driver settings, which are supported by UW-SCSI and USB 2.0 interfaces that support auto-binarisation. Additionally it is equipped with an on-board Kofax 4.1 Professional interface module.

The overall processing speed is greatly enhanced due to new high speed CCD technology and latest image processing circuitry. The scanner can scan at resolutions of up to 600 dpi, and at 300 dpi scanning speeds are an impressive 125 pages per minute in simplex and 250 images per minute in duplex in both colour and mono modes (A4 landscape).



500 Sheets



Simplex
125 ppm



Duplex
250 ipm



600 dpi

The fi-5900C comes equipped with three individual ultrasonic sensors which greatly increase the reliability of double feed detection. This, together with superior paper processing and continuous document protection, ensures that if sticky or stapled documents are included in the batch, the sensors identify an overskew incident and interrupt the scanning process to prevent possible damage to the document.

Anti corner cutting is possible thanks to the fi-5900C's multiple sensors, which detect the leading and trailing edges of documents and monitor the paper's path through the scanner. This ensures that paper is scanned until the trailing edge has passed the scanning zone, and is additionally supported by the broader width of the custom made high speed CCD modules.

Hardware supported Kofax VRS 4.1 Professional is bundled with the fi-5900C which can be used for adding advanced image enhancement operations to the scanning process. These can even be combined to receive digital document images that show high visual quality and require little or no additional manual interference. Some typical options include: intelligent content orientation recognition and auto-rotation, automatic colour detection, blank page detection and deletion, as well as background saturation.

Available as optional extras are pre and post imprinters which enable printing of up to 40 characters as an index on the front or back of scanned documents. This additional security can be required in areas such as banking and insurance and can be combined with the driver controlled virtual imprinting function.

Other features include the ability to support up to 8 major languages through the control panel as well as in the driver and the manual. An active output stacking tray for neat batches helps prevent paper sheets from curling. The fi-5900C emits incredibly low noise during operation at less than 55 dB. It features easy access to all consumables and paper path areas. When not in use the hopper module can be closed ensuring minimal desktop space is used as well as keeping the interior of the scanner free from dust.



fi-60F



The fi-60F is the first true flatbed-only document scanner developed by Fujitsu especially for the purpose of easily and quickly scanning single documents at a time. It provides ultra-compact design and absolutely interference-free convenience. The flatbed device is capable of scanning documents up to the size of 105 x 148 mm (A6 format) in colour (24 bi), grayscale (8 bit) and b/w.



Documents are automatically scanned, deskewed and cropped to their actual size in less than 2 seconds including preparation, further image enhancement and presentation.

The fi-60F is aimed at vertical markets such as banking and finance, medical, tourism, immigration and postal services – anywhere where there is a need for scanning documents such as passports, IDs, prescriptions and driving licenses.

Even with the lid opened, documents are automatically scanned, de-skewed and cropped to their actual size, regardless of how they are placed onto the flatbed.

The scanner can be conveniently controlled through most document management systems with the integrated TWAIN or ISIS driver and can be interfaced with most operating systems that are USB 2.0 capable.

fi-5000N

The fi-5000N network adapter for document scanners expands the possibilities of utilising the benefits of professional scanning systems in the workgroup arena. Especially, Fujitsu's document scanner models fi-5120C, fi-5220C and fi-5530C can be accessed by multiple users without limitation of functionality. Moreover, access becomes easy, safe and secure.



Expanding Scanner utilisation

With the fi-5000N utilising the attached document scanner from two directions becomes available:

1. Scan-to-Network

In this scenario the scanning process is initiated from the scanner side. The user walks up to the fi-5000N and authorises himself with his fingerprint, thus activating a pre-defined scanning profile (resolution, orientation, target format, target folder). Then he places his original documents onto the scanner's feeder or flatbed and presses the scan button on the scanner panel. The scan job is automatically processed.

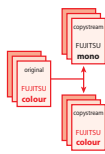
2. Pull-from-Network

Multiple users can access the fi-5000N attached scanner just as if it were directly connected to their PC. Dedicated tasks like archiving can be achieved with little operational change. The user addresses the scanner from within his regular DMS application and defines the scanning parameters as required. Then

he places the documents onto the scanner's feeder and activates the scanner by placing his finger on the fi-5000N fingerprint scan unit. The scanning process begins and the resulting files are routed through to the initiating application.

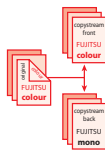


Soft IPC V2.5 is an optional software image enhancement tool for Fujitsu workgroup or departmental scanners. Alongside TWAIN or ISIS drivers it automatically performs advanced binarisation processes and produces b/w and colour images simultaneously.



Simultaneous creation of b/w and colour images

Original documents are scanned and automatically stored into two separate files – one containing colour data, the other holding monochrome information. The colour file serves as a reference for archiving, whereas the b/w data is handed over to the next processing step, for example, text recognition.



Separate scanning profiles for front and back page

Both sides of the original document are scanned in one single step. The operator can have front pages automatically created in colour and reverse sides created in b/w, or vice versa. For example in case reverse sides contain general terms and conditions, such as on invoices.

Automatically optimised monochrome scanning

Soft IPC V2.5 provides pre-defined templates that can be used for most common document types. For example, if text documents are to be scanned, fixed threshold function is available. There is no need to interfere with any other settings. In comparison, mixed document content consisting of photos and text might require more adjustment possibilities, especially if OCR is to be applied afterwards. This is why there are appropriate templates like OCR DTC or random dither, leaving open the opportunity to change dither, gradation, threshold, brightness and contrast values. When batch scanning of documents is a regular task, Fujitsu Soft IPC V2.5 significantly increases productivity.

Soft IPC V2.5 Specifications

Necessary drivers	Latest version of TWAIN or ISIS driver
Functions with TWAIN driver only	B/w and colour image simultaneously / individual b/w or colour for front and reverse side / 24 bit colour
Functions with TWAIN and ISIS drivers	Fixed Threshold / OCR DTC (Pre Filtering/Gradation/Threshold Table/Smoothing/Noise Removal) / Form DTC (Sensitivity/Threshold)/Dither (Dither pattern/Outline detect threshold/Brightness/Contrast)/Minimise Average Error (Outline detect threshold/Brightness/Contrast)/Random Dither (Based Dither/Gradation/Outline detect threshold/Brightness/Contrast)

The exceptional Kofax VRS 4.1 enhancement tools now come bundled with Fujitsu scanners.

Kofax VRS 4.1 Basic* software bundled with:

fi-5120C, fi-5220C, fi-4340C, fi-5530C, fi-5650C and fi-5750C.

Kofax VRS 4.1 Professional hardware bundled with:

fi-4860C2 and fi-5900C.

VRS (Virtual ReScan) revolutionises scanning and makes the process of scanning documents less costly in terms of time for preparation and of manual intervention during the scanning process. The most important part of scanning and capturing images is your ability to find, retrieve and use them later. Kofax VRS 4.1 Basic allows users to create images that are easier to index and read.

Key features of VRS 4.1 Basic include:

- Automatic de-skew without character degradation
- Automatic brightness settings that are optimal for the document type
- Contrast enhancement for faint content
- Auto-cropping of any background or noise to yield smaller image file sizes
- Despeckling of images

The advanced technology in VRS 4.1 Professional literally cleans up scanned images which in turn makes for a huge improvement in the accuracy from your OCR and ICR software. VRS increases productivity, efficiency and in time sees a greater return for your scanning investment.

Key features of VRS 4.1 Professional include:

- Advanced Clarity makes even “unreadable” images legible
- Automatic image orientation adjusts skewed images, even completely rotating upside down ones, so all captured images are oriented in the same direction
- Intelligently determines if a page is blank and can be eliminated from the workflow
- Correctly identifies and retains color when it is integral to a document (e.g., logo, photo, date stamp) and eliminates it when it is not (e.g., colored paper stock)
- Removing image noise compacts file size, reducing network traffic and storage requirements
- Scanner Configuration Utility simplifies scanner set-up and selection

*Upgradeable to Kofax VRS 4.1 Professional

Assurance Programme

What is the Assurance Programme?

The Assurance Programme from Fujitsu is the manufacturer supported warranty and maintenance offering available across the full range of Fujitsu scanners including desktop scanners such as the ScanSnap S510, workgroup scanners such as the fi-5120C and fi-5220C, the departmental scanners fi-4340C, fi-5650C and fi-5750C up to our production range including the fi-5900C.



In addition to the industry leading standard warranty provision, a series of warranty options and warranty upgrades will also be available as well as Out of Warranty cover for all existing scanners.

How will it work?

Each option will have a unique part number and can be purchased either at the point of sale of the scanner or within 30 days. All purchases will be made via your normal scanner provider who will then be able to provide you with your certificate of warranty. Alternatively by entering your serial number and model description into a dedicated Fujitsu portal you will be able to download and print out your own certificate of warranty.

The Assurance Programme offered by Fujitsu is available in the following European countries:

- Great Britain
- Germany
- Republic of Ireland
- Austria
- Switzerland
- France
- Italy
- Scandinavia

Fujitsu has plans to introduce this programme to further European countries in the future.

For more information please visit:
www.fel.fujitsu.com/assurance

Scanner model	Standard Warranty			Upgrades Available at time of purchase, or within 30 days of purchase for all scanners within each group
	12 months Advanced Exchange ¹	24 months Advanced Exchange ¹ (not for fi-60F or fi-5000N)	12 months 5 x 8 On Site Repair ³	
Office				<ul style="list-style-type: none"> • 24 months Advanced Exchange¹ • 36 months Advanced Exchange¹ • Advanced Exchange PLUS² • 5 x 8 On Site Repair³ for 12, 24 or 36 months (fi-5015C and fi-5110C only) • 5 x 8 x 8 On Site Repair⁴ for 12, 24 or 36 months (fi-5015C and fi-5110C only)
ScanSnap S510		✓		
ScanSnap S500M		✓		
fi-5015C	✓			
fi-5110C	✓			
fi-60F	✓			
fi-5000N	✓			
Workgroup				<ul style="list-style-type: none"> • 24 months Advanced Exchange¹ • 36 months Advanced Exchange¹ • Advanced Exchange PLUS² • 5 x 8 On Site Repair³ for 12, 24 or 36 months • 5 x 8 x 8 On Site Repair⁴ for 12, 24 or 36 months • 5 x 4 x 4 On Site Repair⁵ for 12, 24 or 36 months • Preventative maintenance
fi-5120C	✓			
fi-5220C	✓			
fi-5530C	✓			
Departmental				<ul style="list-style-type: none"> • 5 x 8 On Site Repair³ for 24 or 36 months • 5 x 8 x 8 On Site Repair⁴ for 12, 24 or 36 months • 5 x 4 x 4 On Site Repair⁵ for 12, 24 or 36 months • Installation service • Preventative maintenance
fi-4340C		✓		
fi-5650C		✓		
fi-5750C		✓		
Production				<ul style="list-style-type: none"> • 5 x 8 On Site Repair³ for 24 or 36 months • 5 x 8 x 8 On Site Repair⁴ for 12, 24 or 36 months • 5 x 4 x 4 On Site Repair⁵ for 12, 24 or 36 months • Installation service • Preventative maintenance
fi-4860C2		✓		
fi-5900C		✓		

Notes:

¹ **Advanced Exchange**

Replacement of the faulty unit with a new/as-new unit within 2 days

² **Advanced Exchange PLUS**

Your own scanner is returned, rather than an as-new unit

³ **5 x 8 On Site Repair**

Engineer on site, 8 hour response, 5 days a week

⁴ **5 x 8 x 8 On Site Repair**

Engineer on site, 8 hour response, 8 hour fix (maximum total 16 hours), 5 days a week

⁵ **5 x 4 x 4 On Site Repair**

Engineer on site, 4 hour response, 4 hour fix (maximum total 8 hours), 5 days a week (conditions apply)

All response/fix times are targeted. For other options please contact your scanner provider.

European ISV Partner Programme and Independent Software Vendor Collaboration Centre (ICC)

Fujitsu Europe has initiated the European ISV Partner Programme to further support the development of document related solutions throughout Europe's business environments. This programme is set to make the benefits of document management solutions transparent for business users, who are looking into first time installations as well as expansion or migration of existing solutions. Furthermore, the European ISV Partner Programme makes it easy for ISVs to integrate document capture hardware efficiently and reliably into their solutions. New software versions can be tested prior to their release, assuring business users of their functional capabilities and flawless interoperability with Fujitsu's document scanners.



Fujitsu acknowledges that Enterprise Content Management (ECM) is a vital process for an organisation to provide a market and society with valuable information, products and services. It is a crucial step for a company to implement a proper ECM, utilising various infrastructures and tools in the ever-evolving IT technology arena.

Fujitsu Europe Limited Group is proud to offer an unequalled gateway to Europe and its enterprise customers – supporting the strive to expand and exploit business opportunities for:

- Document Related Technologies (DRT)
- Document Management & Archiving (DMA)
- Enterprise Content Management (ECM)
- Electronic Document & Records Management (EDRM)
- Information Management
- Forms Processing
- Workflow Processing
- Industrial Collaboration

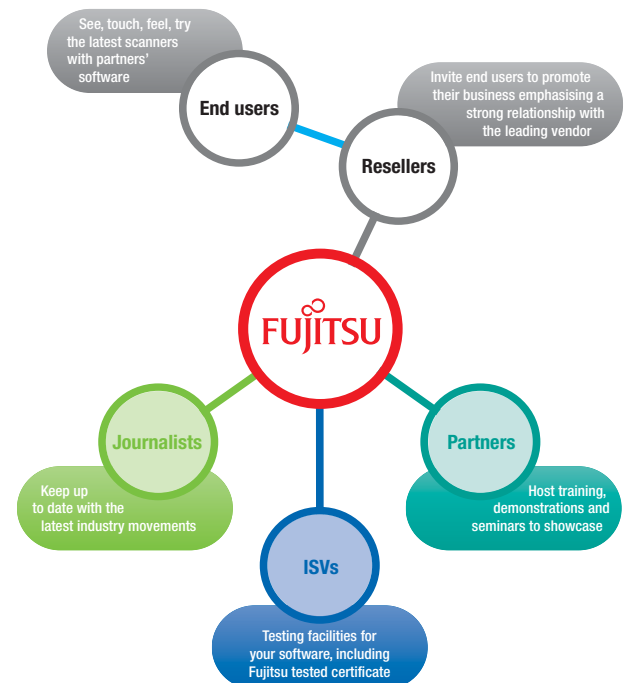
The European ISV Partner Programme is one building block to standardise the process of implementation and to provide confidence in making the right choice. As an integral part of this offering, Fujitsu hosts the ICC that is open to the public on request.

What is the ICC?

The Fujitsu ICC is set up to be the primary point of information and assistance for seeing, understanding, testing and experiencing complete document related solutions. Located in London, ISVs, VARs, SIs, partners and enterprise users from all over Europe now have a unique location within comfortable reach where they can actually put their hands on what would otherwise be intangible – their future solution.

- Check that your latest software works with Fujitsu scanners
- Share the value of your Document Management Solution with your customers
- Discover why you need ECM to expand your corporate value

To become an active member of the European ISV partner community, simply contact Fujitsu Europe and learn more about the programme. We will then coordinate deployment of your solution into the ICC and discuss further possibilities of collaboration and support.



			ScanSnap S510	ScanSnap S500M	fi-5015C	fi-5110C	fi-5120C	fi-5220C	fi-5530C	fi-4340C	fi-5650C	fi-5750C	fi-4860C2	fi-5900C	fi-60F	
Scanning speed	Simplex (mono)	Speed at 200 dpi, DIN A4, portrait (ppm)	18 ¹	18 ¹	15	15	25	25	35	40	55	55	60	100		
	Simplex (colour)	Speed at 200 dpi, DIN A4, portrait (ppm)	18 ¹	18 ¹	15 ¹	15 ¹	25	25	35	16	55	55	60	100		
Duplex scanning	Duplex (mono)	Speed at 200 dpi, DIN A4, portrait (ipm)	36 ¹	36 ¹	30	30	50	50	70	80	110	110	120	200		
	Duplex (colour)	Speed at 200 dpi, DIN A4, portrait (ipm)	36 ¹	36 ¹	30 ¹	30 ¹	50	50	70	29	110	110	120	200		
Document feeding mode	Automatic Document Feeder (ADF) Flatbed		•	•	•	•	•	•	•	•	•	•	•	•	•	
ADF capacity			50	50	50	50	50	50	100	100	200	200	500	500		
Double feed detection feature					•	•	•	•	•	•	•	•	•	•	•	
Ultrasonic double feed detection feature					•	•	•	•	•	•	•	•	•	•	•	
Interface (see description inside)			USB 2.0	USB 2.0	USB 2.0	USB 2.0	SCSI-2 USB 2.0	SCSI-2 USB 2.0	SCSI-2 USB 2.0	SCSI-2 USB 2.0	SCSI-2 USB 2.0	SCSI-2 USB 2.0	SCSI-2 USB 2.0	UW-SCSI USB 2.0	UW-SCSI USB 2.0	USB 2.0
										TP-IF	TP-IF	TP-IF	TP-IF	TP-IF	TP-IF	
Image reproduction (all models have black/white, grayscale and colour output)			• ²	• ²	•	•	•	•	•	•	•	•	•	•	•	
Light source	White lamp		•	•	•	•	•	•	•	•	•	•	•	•	•	LED RGB
Dropout colour red, green, blue selectable					•	•	•	•	•	•	•	•	•	•	•	
Digital colour dropout function / Multistreaming / Blank Page Detection															•	
Document size	ADF Min.	DIN format	A8	A8	A6	A8	A8	A8	A8	A8	A8	A8	A7	A8		
		mm	50.8 x 50.8	50.8 x 50.8	115 x 140	53 x 74	53 x 74	53 x 74	53 x 74	53 x 74	53 x 74	53 x 74	53 x 74	74 x 105	53 x 74	
	ADF Max.	DIN format	A4	A4	A4	A4	A4	A4	A4	A3	A4	A3	A3	A3	A3	
		mm	210 x 297	210 x 297	216 x 356	210 x 297	210 x 297	210 x 297	210 x 297	297 x 420	210 x 297	297 x 420	297 x 420	297 x 420	297 x 420	
	Flatbed	DIN format			A4			A4		A4		A3			A6	
Optical resolution (dpi)	ADF/FB (where applicable)		600	600	600	600	600	600	600	600	600	600	400	600	600	
Standard equipment	Operator panel				•	•	•	•	•	•	•	•	•	•	•	
	Document background selectable (white/black)										• ³				Black Pad	
	Paper counter		•	•	•	•	•	•	•	•	•	•	•	•	•	
Standard image processing functions	Deskew and Autocropping		•	•			•	•	•	•	•	•	•	•	•	
	Special halftone pattern "Error Diffusion"					•	•	•	•	•	•	•	•	•	•	
	JPEG Data compression		•	•	•	•	•	•	•	•	•	•	•	•	•	
	Image emphasis				•	•	•	•	•	•	•	•	•	•	•	
Standard software bundles	Image memory					16 MB	16 MB	16 MB	64 MB	32 MB	256 MB	256 MB	256 MB	1 GB		
	TWAIN / ISIS driver				•	•	•	•	•	•	•	•	•	•	•	
	Fujitsu GUI application ScandAll21				•	•	•	•	•	•	•	•	•	•	•	
	Adobe® Acrobat® 7.0				•	•	•	•	•	•	•	•	•	•	•	
	Adobe® Acrobat® 8.0				•	•	•	•	•	•	•	•	•	•	•	
	ABBYY® FineReader OCR solution				•	•	•	•	•	•	•	•	•	•	•	
	ScanSnap Manager				•	•	•	•	•	•	•	•	•	•	•	
Hardware pre-installed	Kofax VRS 4.1 Professional						• ⁴	• ⁴	• ⁴	• ⁴	• ⁴	• ⁴	•	•		
Options	Soft IPC V2.5				•	•	•	•	•	•	•	•	•	•	•	
	Pre-/Post-Imprinter						Post		Post	Post	Post		Pre/Post	Pre/Post		
	Network connectable via fi-5000N					•	•	•	•							
	Image Processing Module (IPC-4D), Video Interface, Memory Compression Module (JPG)									•						
Recommended paper weight	41-203 g/m ²										•	•			31-209	
	52-127 g/m ²		•	•	•	•	•	•	•	•	•	•	•	•	•	
Power consumption	220 V - 240 V ± 10% 50/60 Hz (VA)		<28	<28	<24	<28	33	38	<57	<120	<216	<216	<200	<250	<8	
ENERGY STAR® / Power consumption in energy save mode			• / <6	• / <8	• / <6	• / <6	• / <6	• / <6	• / <12	• / 12	• / <6	• / <12	• / 15	• / 12	• / 2	
Noise level (dBA)	Scan Mode		<50	<50	58	50	50	50	50	53	<53	<53	<55	<55	<45	
	Stand-by		6.5	6.5	7.2	6.5	6.5	6.5	6.5	40				50		
Weight (kg)			2.7	2.5	5.5	2.7	3.5	8	8.5	15	17	35	45	50	0.9	
Dimensions	Height (mm)		158	150	179	130	158	229	193	220	296	342	523	500	40	
	Width (mm)		284	284	445	293.5	301	302	399	556	639	690	520	540	145	
	Depth (mm)		157	146	332	166	168	569	302	423	428	500	431	540	234	
Typical daily throughput (max)					250	500	1000	1000	2500	4000	8000	8000	20.000	100.000		

¹ colour scanning speed at 150 dpi
² b/w and colour only

³ ADF front side only
⁴ upgradeable to Kofax VRS 4.1 Professional