

## Zebra Printers on Windows Vista and Windows 7.

Please note that the previously used Zebra Universal Driver v5.5.7.25 is not compatible with Windows Vista or Windows 7. A new driver can be downloaded and installed from the following link:

<http://www.alliancegroup.co.uk/zebra-driver.htm>

or

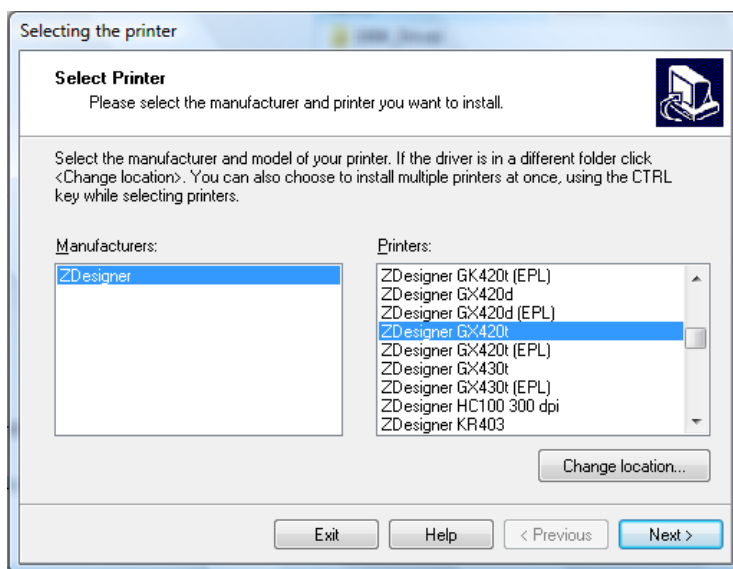
[http://www.zebra.com/id/zebra/na/en/index/drivers\\_downloads/drivers/results.html?productType=7](http://www.zebra.com/id/zebra/na/en/index/drivers_downloads/drivers/results.html?productType=7)

The driver to use now is the Zebra Designer Driver (32 bit/64 bit, Windows Certified) v2.6.42.03

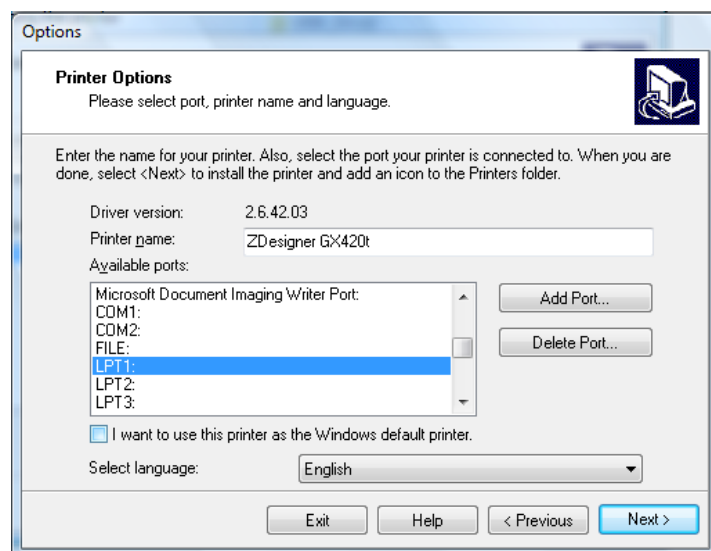
Choose the appropriate printer i.e. GK420t or TLP-2844z.

Download to a location on the c:\ drive.

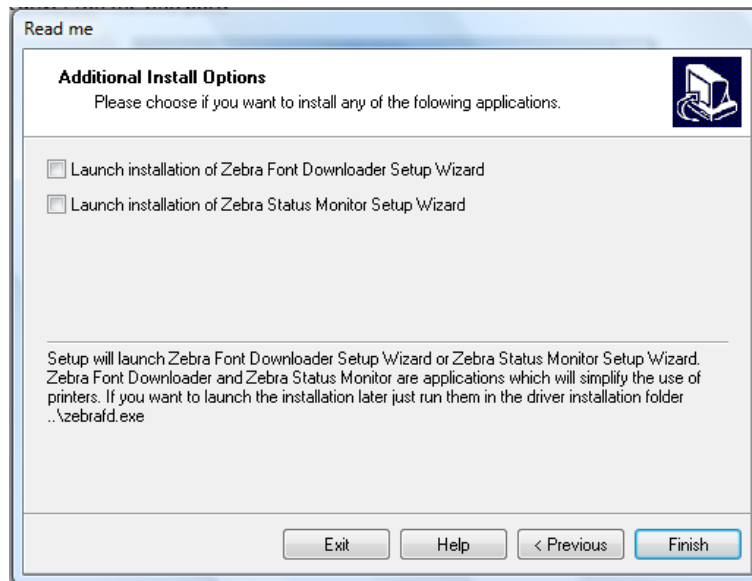
Unzip the self extracting file and the install will begin.



Before plugging the printer in you can install the driver on the LPT1 port as this will be redundant. When the printer is plugged into the USB port the system will recognise the unit and install with the correct drivers on the USB port.



Uncheck the Zebra font downloader box.



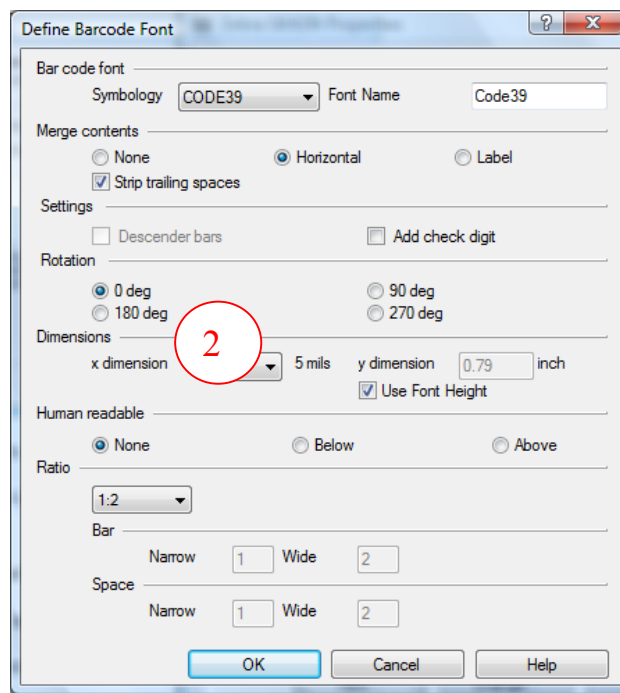
Click on Finish to complete the process. The drivers will then install.

Now plug in the Zebra printer into the USB port. The Laptop/PC should find the newly installed drivers and install on the USB port.

Once this has finished, click on Start/Settings/Printers.

Right-click on the newly installed printer and choose properties.

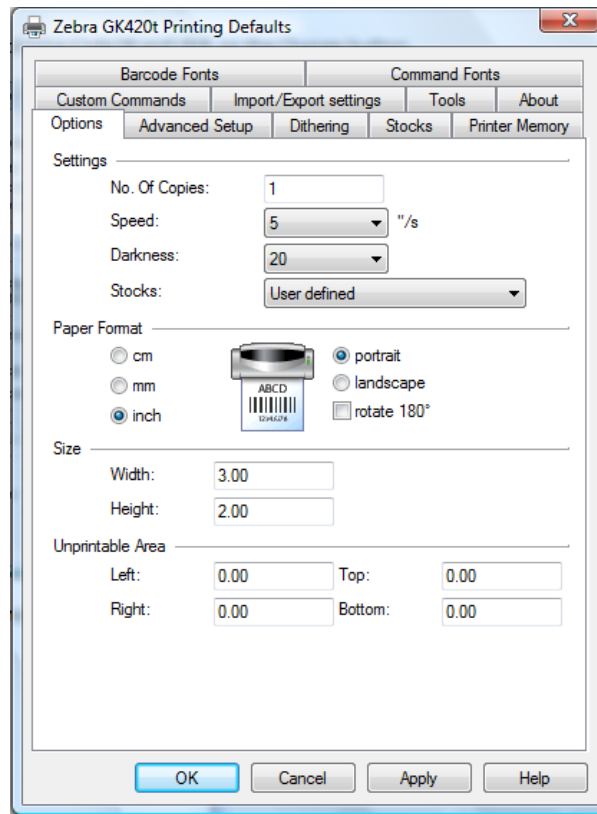
Select the Barcode Fonts Tab and choose Code39 and click on the Change button.



Change 'x dimension' to 2 and ensure the settings match those shown above and select OK

Next choose the Advanced Tab and then click on Printing Defaults.

Match the settings on the Options tab with those shown below and click OK.



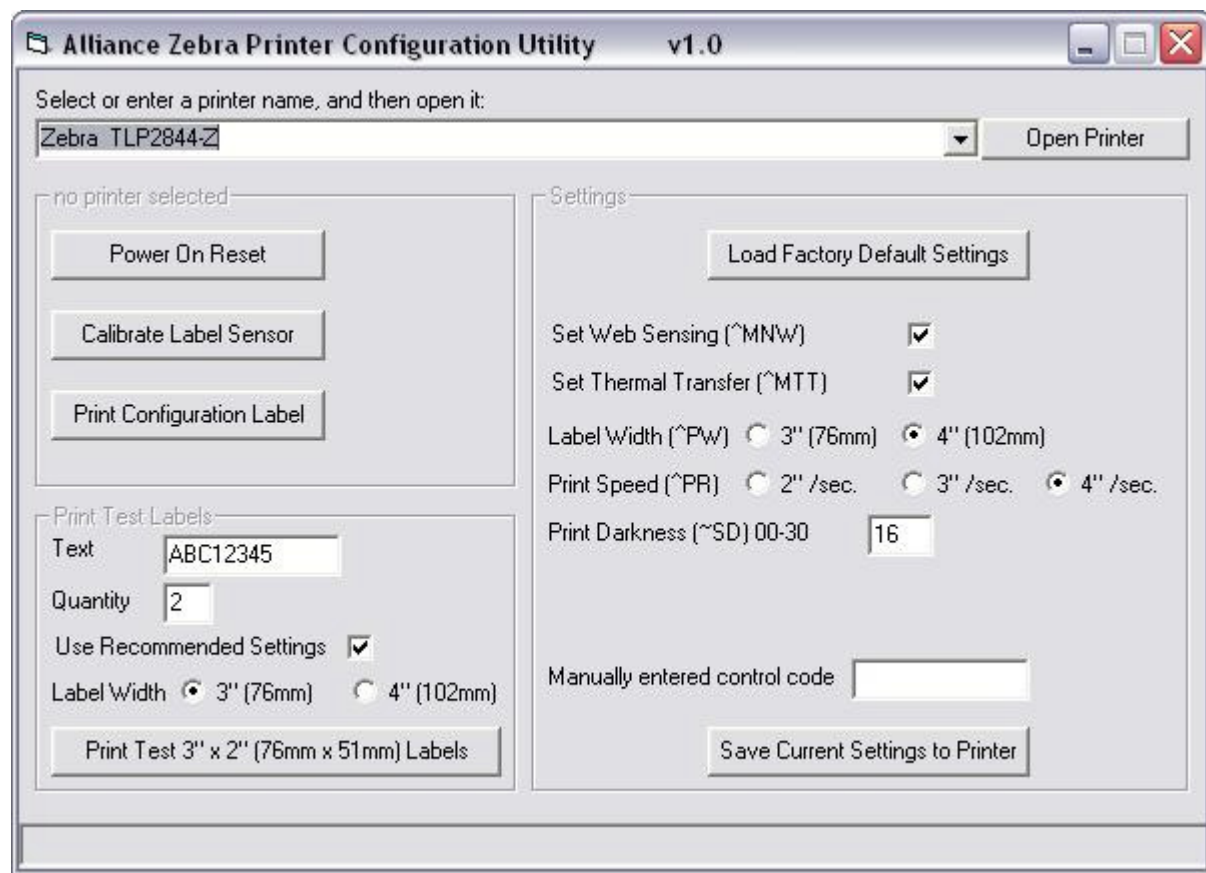
Please exercise caution if putting more than one driver on a laptop/pc system. This can often cause conflicts and printer error. To start the process 'clean' it is best to delete any existing Zebra printers from the printers' folder. Then delete the drivers by RH clicking anywhere in the printers folder and selecting Server Properties. Choose the Drivers tab and remove any existing drivers related to Zebra printers.

Start the process again by reinstalling with new drivers.

PaperChase only expects one Zebra printer driver to be installed. This may begin with "Zebra" or "ZDesigner".

Use the [AllianceZebraConfigure.exe](#) program to configure and test your Zebra printer.

Double click AllianceZebraConfigure.exe to run.



Select your Zebra printer from the dropdown and press 'Open Printer' to open the printer.

Usually start by pressing 'Power On Reset' (this will reset the printer, the lights will go off and on again).

Then press 'Load Factory Default Settings', and make sure 'Set Web Sensing' and 'Set Thermal Transfer' are ticked. Label width should typically be 4" (102mm), and Print Speed 4" per second.

Print darkness can vary, but 16 is a good starting position.

Then press 'Save Current Settings to Printer'

Then 'Calibrate Label Sensor' (this feeds labels through, and tells the printer what size labels you are using).

Optionally 'Print Configuration Label' (this gives you a printout of the printer settings)

You should then print some test labels, choosing the size and quantity.

Try testing the printer from PaperChase to ensure that file labels are being printed and look as they should. You can adjust margins and font sizes in PaperChase Barcode Label Printer Settings.

Further information and advice is available from the following website:

<http://www.alliancegroup.co.uk/zebra-driver.htm>